



# Optelligent™

Smarter Insights. Stronger Performance.



**Optelligent** is your always-on intelligence platform - empowering technicians, project teams, and facility managers to work smarter, faster, and more efficiently than ever.



## SERVICE

*Optelligent acts as an AI-enhanced, 24/7/365 support system designed to deliver faster, more accurate and proactive service to every facility in your portfolio.*

- » Remote diagnostics that minimize unnecessary truck rolls
- » Technicians arrive on-site with clear, root-cause data and courses of action
- » Fewer callbacks through deeper system insights and faster resolution
- » Historical fault and performance trends to guide repairs and replacement requirements
- » After-hours remote monitoring to ensure continuity when teams are online



## AUTOMATION

*Our Command Center accelerates project success - from design through post-installation optimization - ensuring systems perform as intended.*

- » Benchmark and compare building performance before and after upgrades
- » Detect programming gaps and misconfigurations in real-time
- » Identify scheduling issues, and automate controls settings to reduce inefficiencies
- » Verify setpoints meet energy and operational goals
- » Track and optimize system performance proactively



## OPTIMIZATION

*With continuous monitoring and actionable insights, Optelligent enables energy-saving strategies that reduce waste, improve comfort, and support organizational goals.*

- » Early detection of operational inefficiencies
- » Understand equipment operational profiles for data-backed actions that prevent waste
- » Prioritize low-to-no cost energy conservation measures to quick performance enhancements
- » Validate results with measurable, transparent performance metrics and reporting
- » Monitor system drift patterns overtime and re-tune operations to sustain energy savings

## Benefits & Results that Make an Impact



### 20-25% Energy Optimization

Noticable reduction in energy consumption through early detection of inefficiencies



### 10-20% Service Efficiency

Remote access and triage capabilities to reduce number of unnecessary truck rolls



### 30-60% Faster Response Time

Issues identified and addressed before it becomes a bigger problem.



### 10-15% Reduced Equipment Downtime

Reduced instances of unplanned downtime on mission-critical systems.

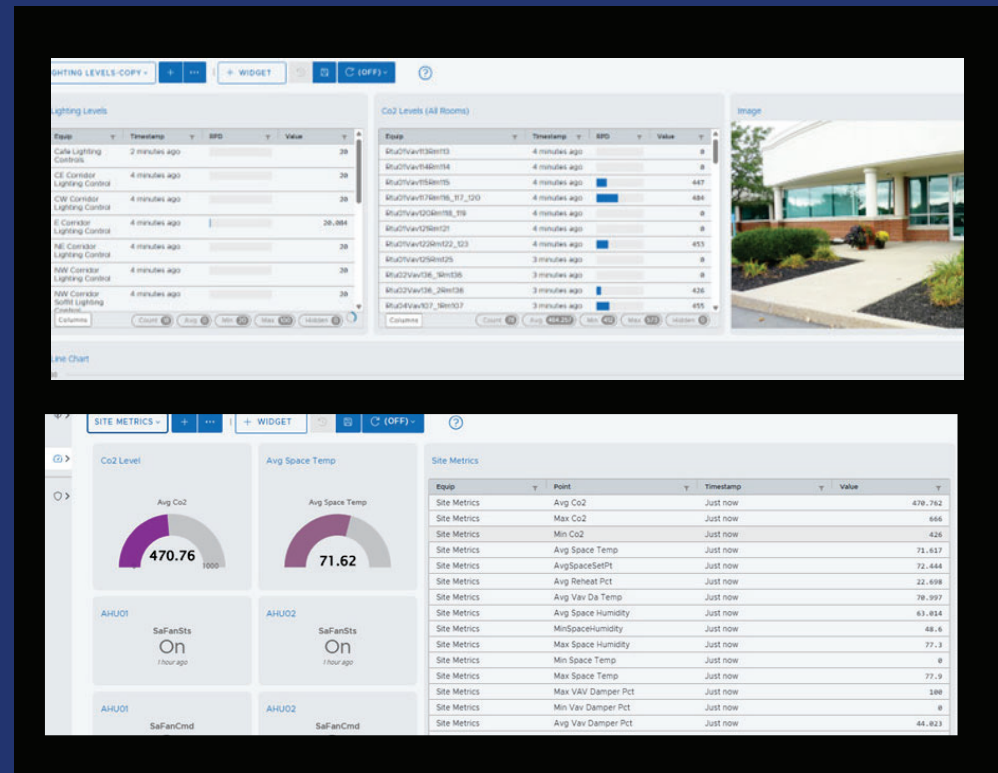


### 2x - 6x Return on Investment

Re-invest savings and experience stronger capital planning with data-driven visibility into longterm performance trends and upgrading requirements.

## What You Get

- ✓ 24/7 Virtual Technician. Constant oversight and AI-driven reporting with human-in-the-loop reviews.
- ✓ Predictive Fault Detection & Diagnostics. Pre-emptive issue detection, avoiding breakdowns and extended asset life.
- ✓ Expert Recommendations. Not just alerts. Our team turns system signals into prioritized, actionable service tasks.
- ✓ Cloud-based + Rapid Deployment. Updates in minutes without disrupting operations.
- ✓ Secure, Scalable, and System-Agnostic. Connects to diverse building systems without vendor lock-in.



# Optelligent™

**Work Smarter. Be Energy Efficient. Improve Results.**

---